

Date: 2/7/2025 **Project:** Nipsco - WO 50609-911; 69KV - St. John Circuit Project - Traffic plan to pull wire over SR 55

Comments:

This Plan is not signed or sealed by certified Engineer, but is an illustration for the governing agency to approve before work begins.

Traffic control will be installed using the latest standards set forth by INDOT and the MUTCD.

All spacing and lights for the signs and devices are not to scale, but will be installed per INDOT current standards.

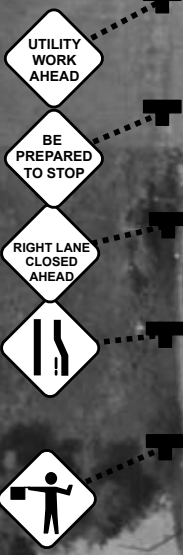
****NOTES****

Nipsco crews will install new wires going over IN 55 / Taft St on the Northside of 93rd Ave.

93rd Ave on the East side of IN 55 / Taft St will be closed and detoured North to US 30.

Traffic will be restricted into 1 lane in all directions to allow the traffic crew to stop traffic intermittently as needed to safely pull new wires over head.

Traffic stoppages will be less than 20 minutes at a time.



Sign spacing - 350'

Taper Length - 540'

W 91st Dr

SR 55 / Taft St



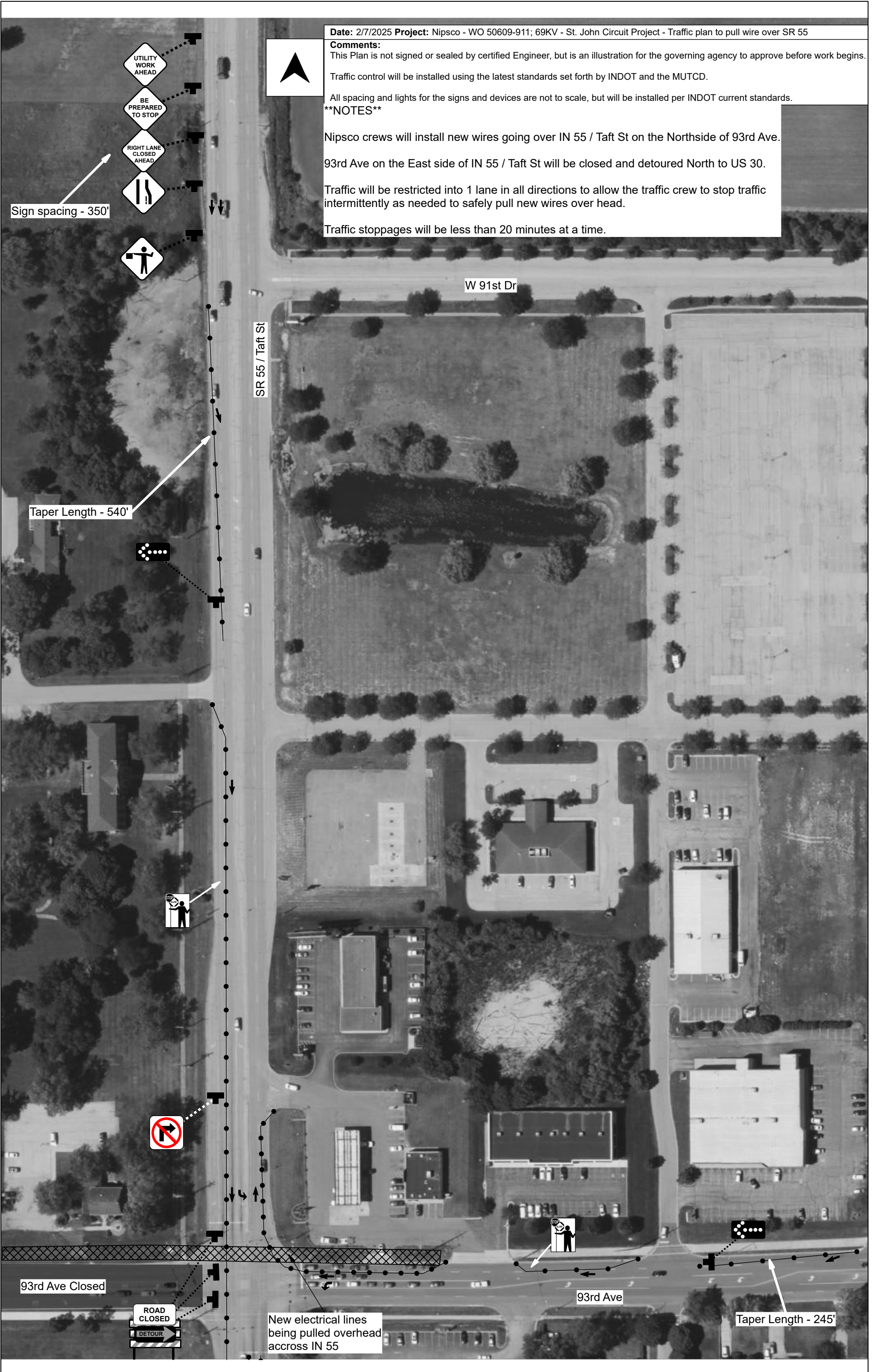
93rd Ave Closed

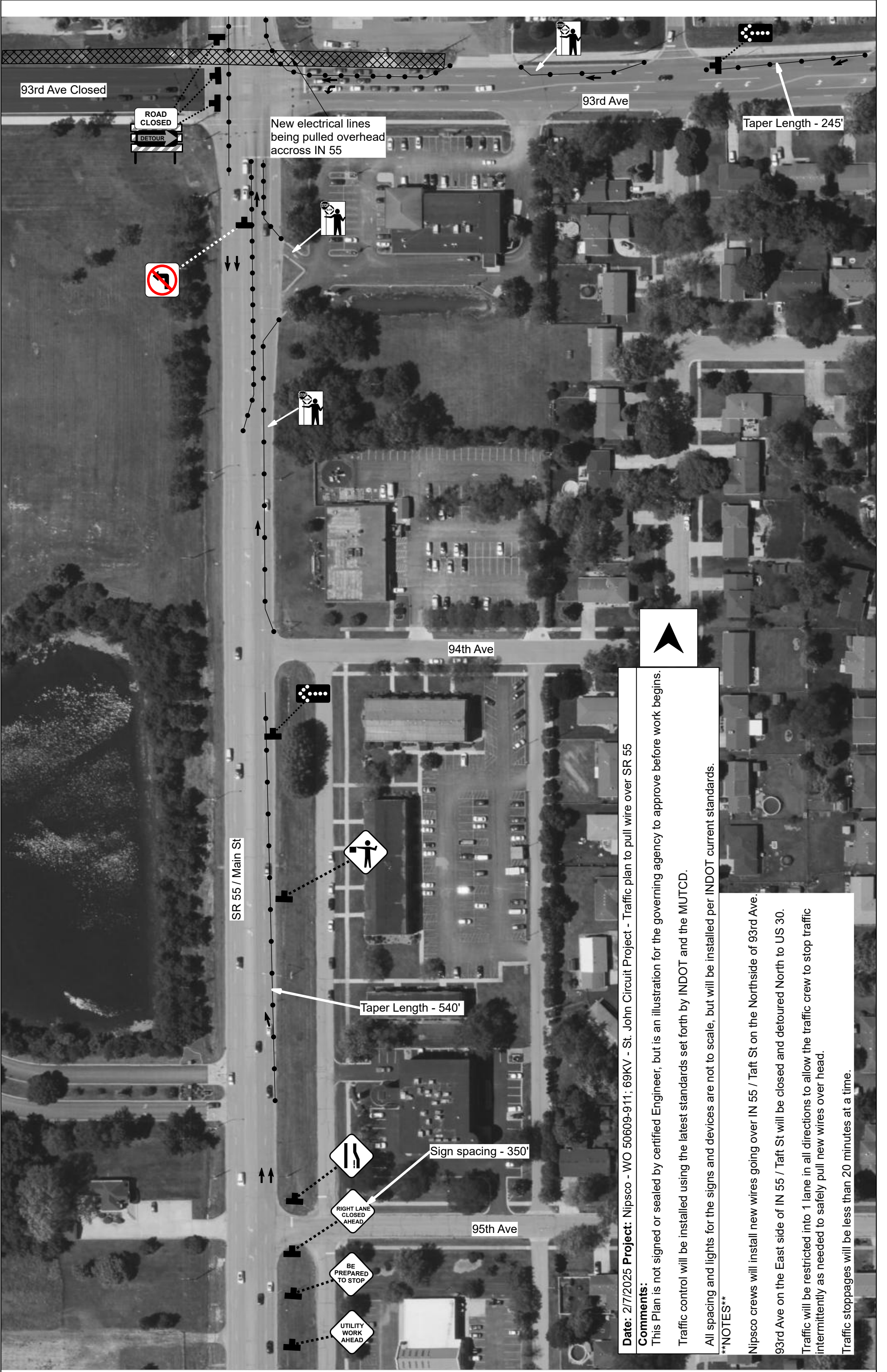


New electrical lines being pulled overhead across IN 55

93rd Ave

Taper Length - 245'





Date: 2/7/2025 **Project:** NipSCO - WO 50609-911; 69KV - St. John Circuit Project - Traffic plan to pull wire over SR 55

Comments:
 This Plan is not signed or sealed by certified Engineer, but is an illustration for the governing agency to approve before work begins.
 Traffic control will be installed using the latest standards set forth by INDOT and the MUTCD.

All spacing and lights for the signs and devices are not to scale, but will be installed per INDOT current standards.

****NOTES****
 NipSCO crews will install new wires going over IN 55 / Taft St on the Northside of 93rd Ave.
 93rd Ave on the East side of IN 55 / Taft St will be closed and detoured North to US 30.
 Traffic will be restricted into 1 lane in all directions to allow the traffic crew to stop traffic intermittently as needed to safely pull new wires over head.
 Traffic stoppages will be less than 20 minutes at a time.

Date: 2/7/2025 **Project:** Nipsco - WO 50609-911; 69KV - St. John Circuit Project - Traffic plan to pull wire over SR 55

Comments:
 This Plan is not signed or sealed by certified Engineer, but is an illustration for the governing agency to approve before work begins.
 Traffic control will be installed using the latest standards set forth by INDOT and the MUTCD.
 All spacing and lights for the signs and devices are not to scale, but will be installed per INDOT current standards.

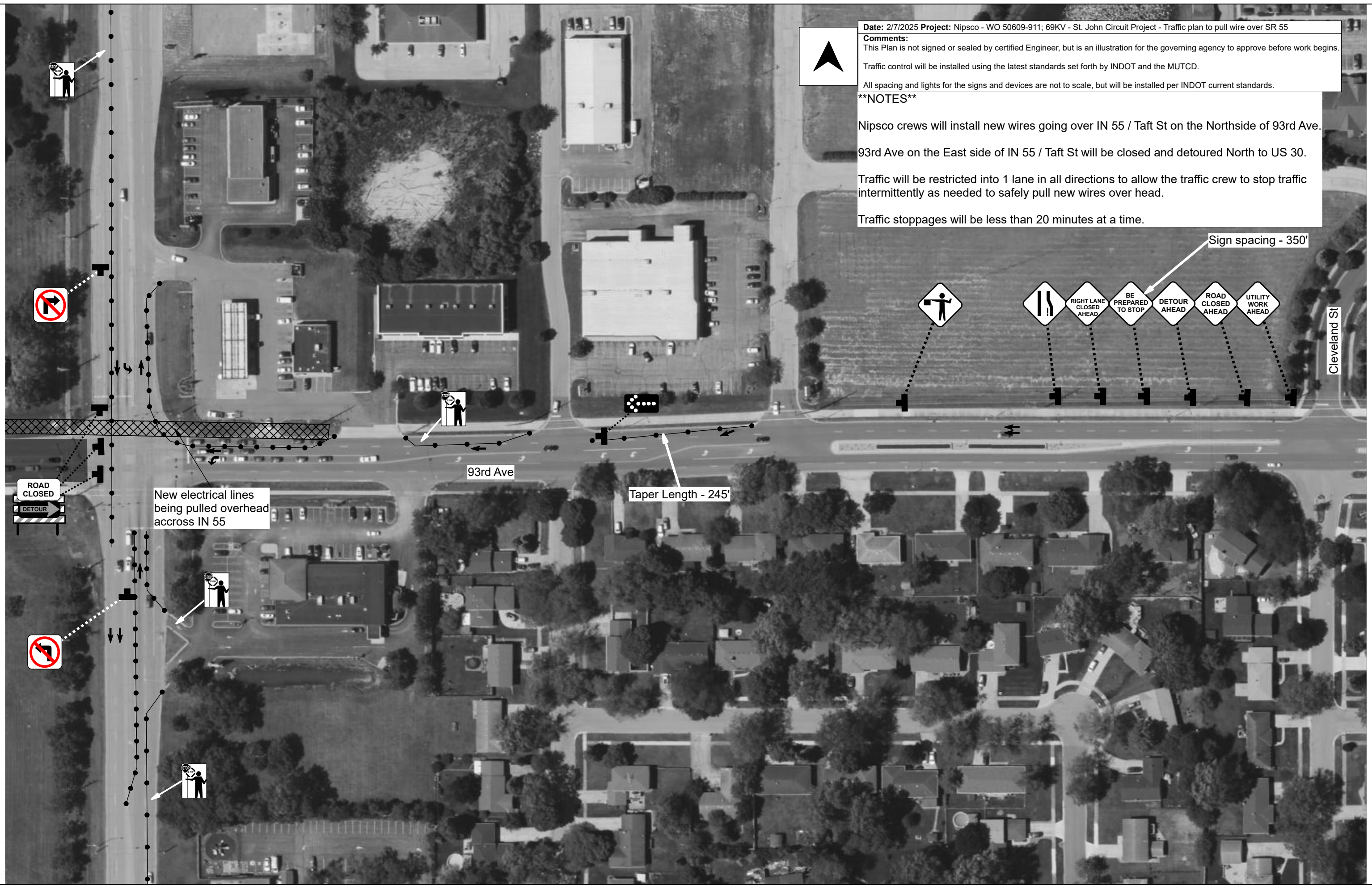
****NOTES****

Nipsco crews will install new wires going over IN 55 / Taft St on the Northside of 93rd Ave.

93rd Ave on the East side of IN 55 / Taft St will be closed and detoured North to US 30.

Traffic will be restricted into 1 lane in all directions to allow the traffic crew to stop traffic intermittently as needed to safely pull new wires over head.

Traffic stoppages will be less than 20 minutes at a time.



93rd Ave

Taper Length - 245'

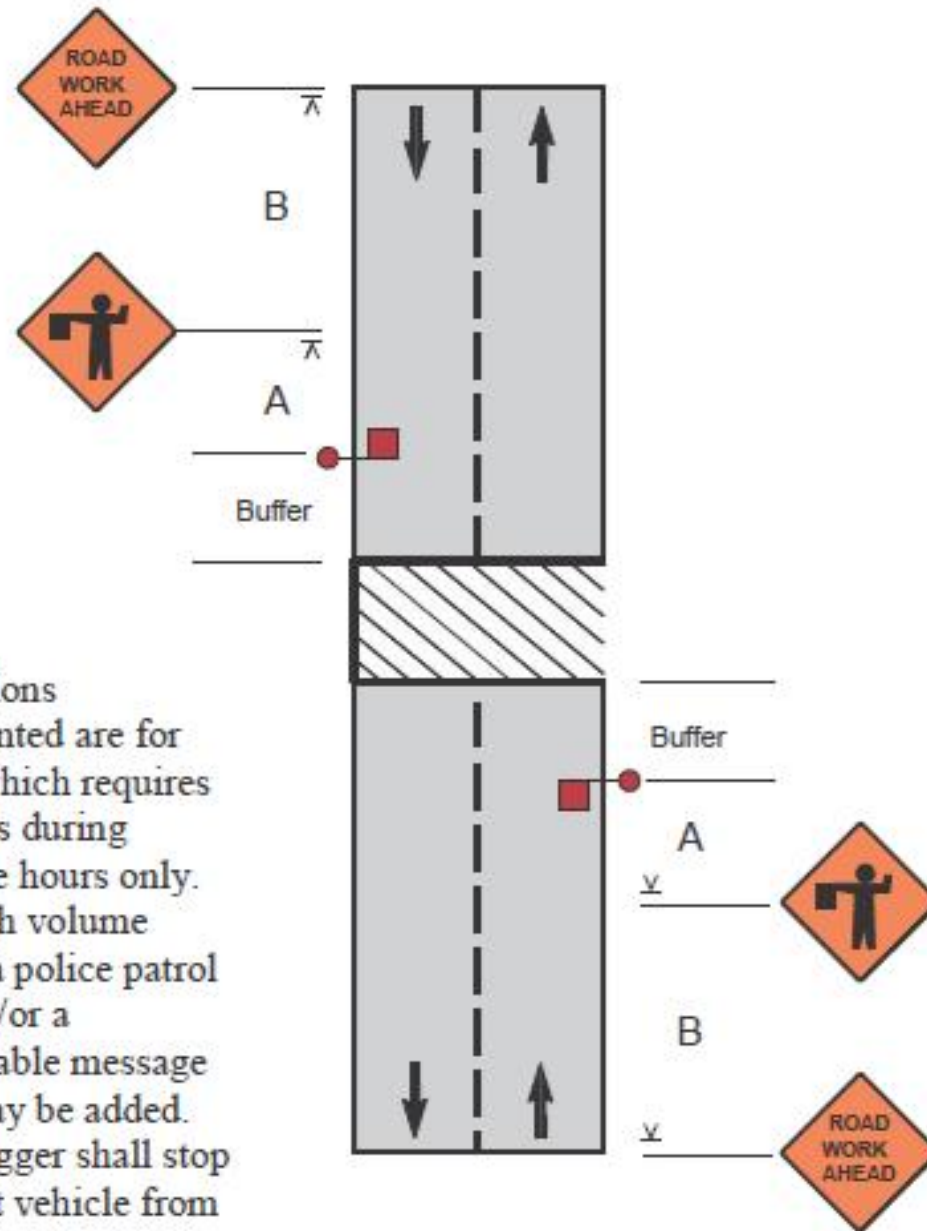
Sign spacing - 350'

Cleveland St

New electrical lines being pulled overhead across IN 55

ROAD CLOSED
DETOUR

Temporary Road Closure (Short Duration – up to 20 minutes)



Notes:

1. Conditions represented are for work which requires closings during daytime hours only.
2. For high volume roads, a police patrol car and/or a changeable message sign may be added.
3. The flagger shall stop the first vehicle from the shoulder as shown. After stopping the first vehicle if the view of the flagger is obstructed, then he/she should move to the centerline to stop additional traffic.
4. Flaggers shall use approved flagging procedures according to the MUTCD and as shown on page 76.

Speed Limit (mph)	Sign Spacing A (ft)	Sign Spacing B (ft)	Sign Spacing C (ft)	Buffer (ft)
25	100	100	100	160
30	100	100	100	200
35	350	350	350	280
40	350	350	350	320
45	500	500	500	360
50	500	500	500	440
55	500	500	500	520
60	1000	1600	2640	600