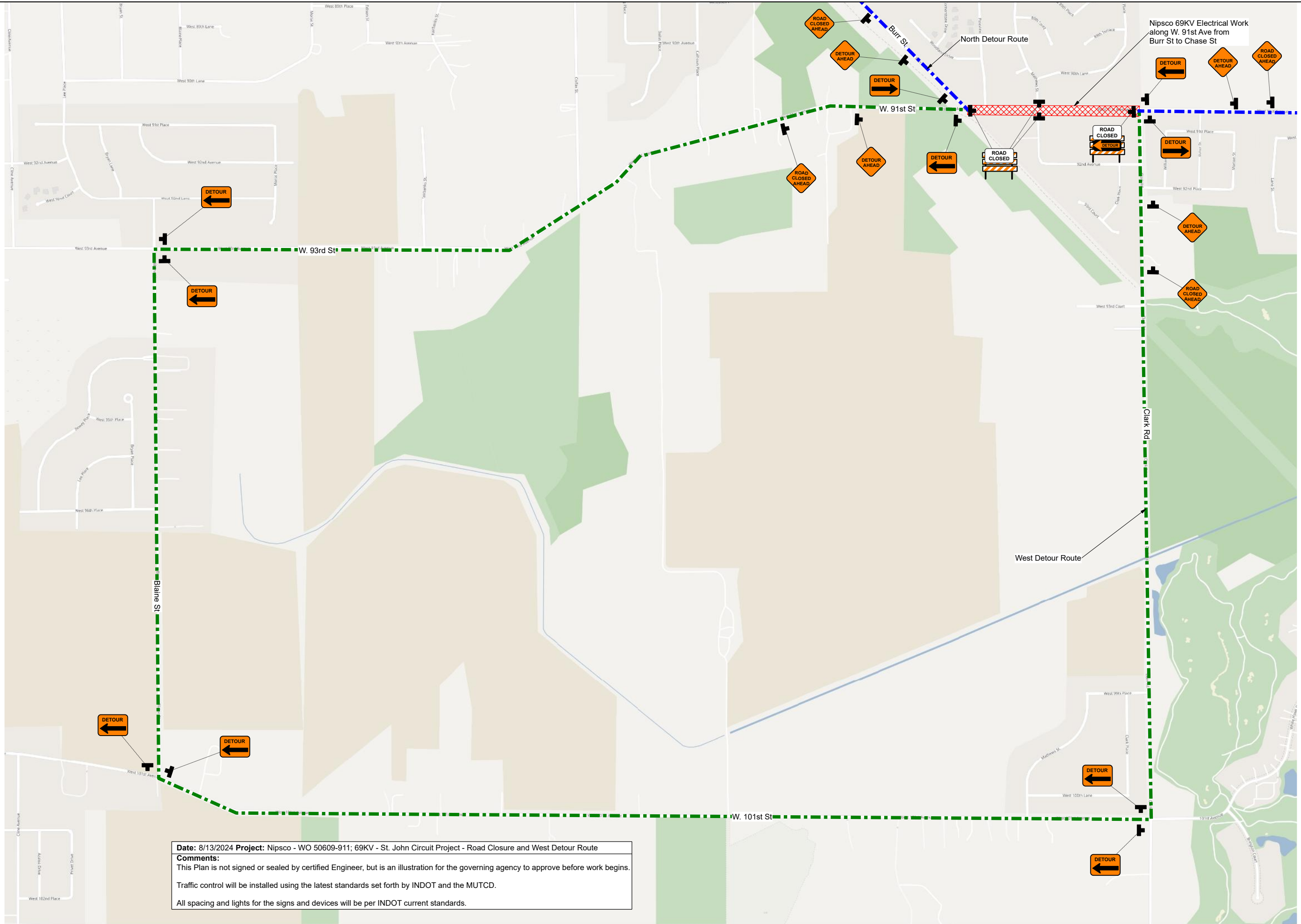


Date: 8/13/2024 **Project:** NipSCO - WO 50609-911; 69KV - St. John Circuit Project - Road Closure and North Detour Route

Comments: This Plan is not signed or sealed by certified Engineer, but is an illustration for the governing agency to approve before work begins.

Traffic control will be installed using the latest standards set forth by INDOT and the MUTCD.

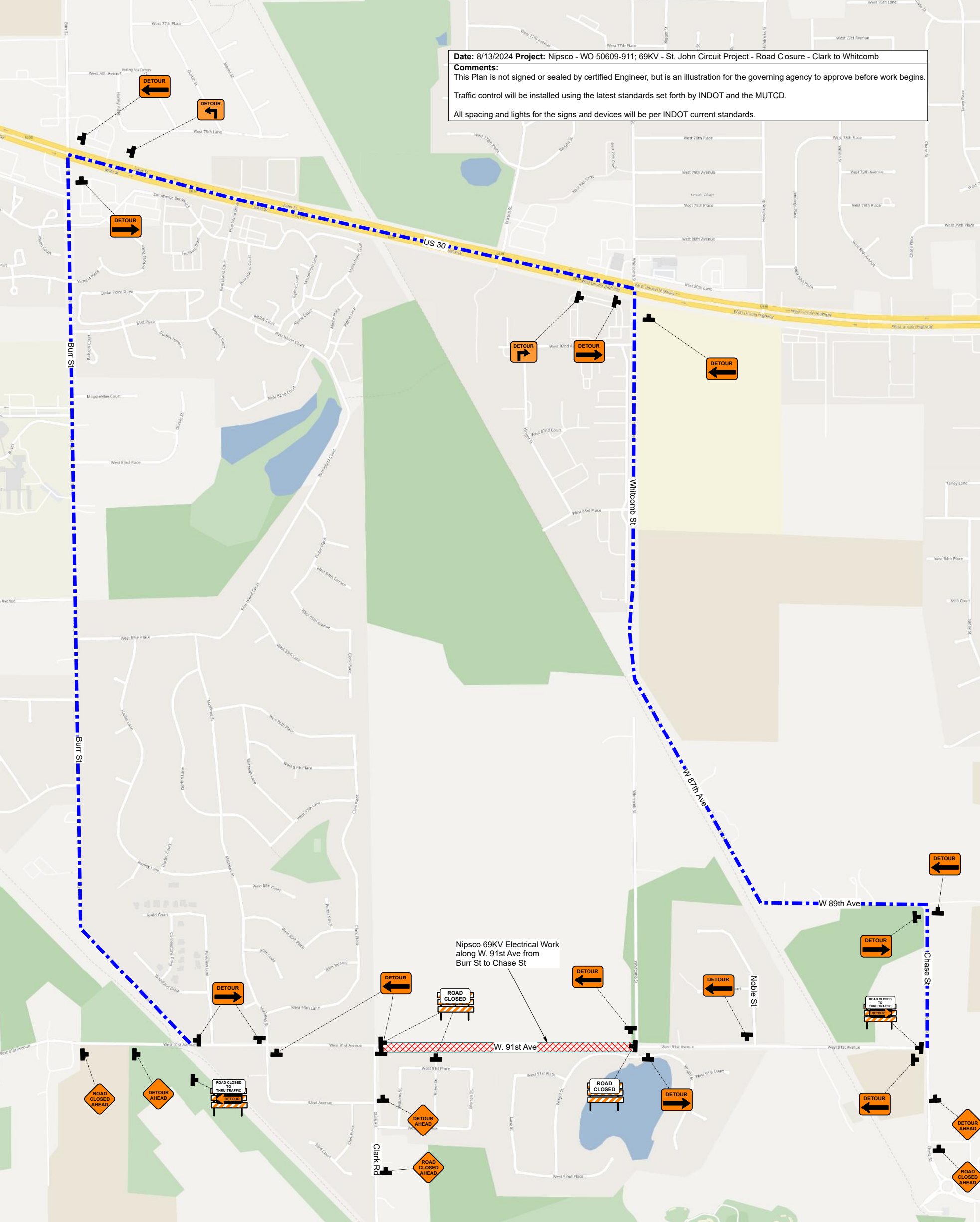
All spacing and lights for the signs and devices will be per INDOT current standards.



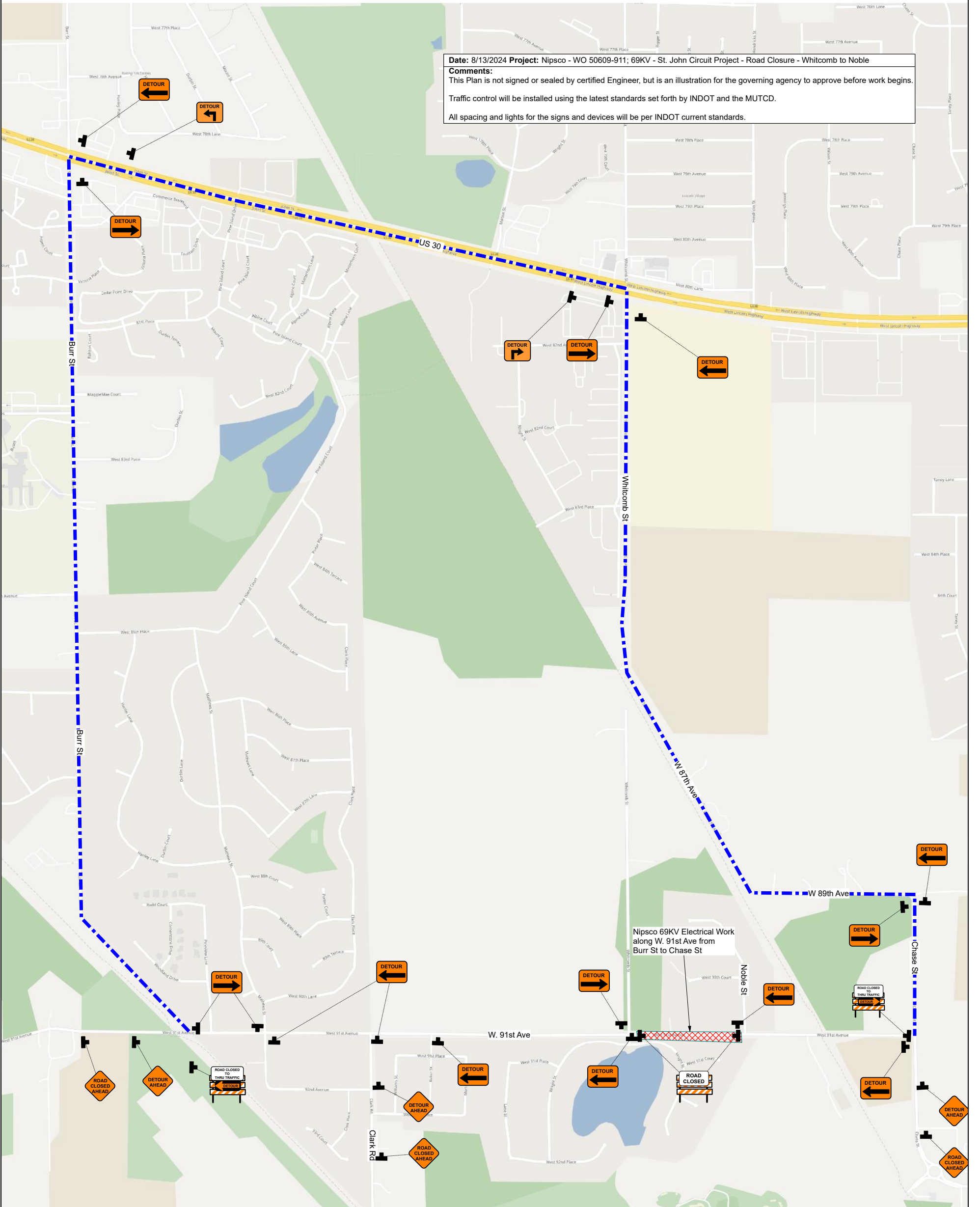
Date: 8/13/2024 **Project:** NipSCO - WO 50609-911; 69KV - St. John Circuit Project - Road Closure and West Detour Route

Comments:
 This Plan is not signed or sealed by certified Engineer, but is an illustration for the governing agency to approve before work begins.
 Traffic control will be installed using the latest standards set forth by INDOT and the MUTCD.
 All spacing and lights for the signs and devices will be per INDOT current standards.

Date: 8/13/2024 **Project:** NipSCO - WO 50609-911; 69KV - St. John Circuit Project - Road Closure - Clark to Whitcomb
Comments:
This Plan is not signed or sealed by certified Engineer, but is an illustration for the governing agency to approve before work begins.
Traffic control will be installed using the latest standards set forth by INDOT and the MUTCD.
All spacing and lights for the signs and devices will be per INDOT current standards.



Date: 8/13/2024 **Project:** NipSCO - WO 50609-911; 69KV - St. John Circuit Project - Road Closure - Whitcomb to Noble
Comments:
This Plan is not signed or sealed by certified Engineer, but is an illustration for the governing agency to approve before work begins.
Traffic control will be installed using the latest standards set forth by INDOT and the MUTCD.
All spacing and lights for the signs and devices will be per INDOT current standards.



Date: 8/13/2024 **Project:** Nipsco - WO 50609-911; 69KV - St. John Circuit Project - Road Closure - Noble to Chase
Comments:
This Plan is not signed or sealed by certified Engineer, but is an illustration for the governing agency to approve before work begins.
Traffic control will be installed using the latest standards set forth by INDOT and the MUTCD.
All spacing and lights for the signs and devices will be per INDOT current standards.

